



PRICE ALL-IN-ONE SELECTION TUTORIAL

Learn the basics of selecting PRICE terminal units with this brief introduction to the All-In-One software

Getting Started.....2

Terminal Quick Entry Selection Method.....3

Product Catalog Selection Method.....5

Quick Start Selection Method.....6

Adjusting Terminal Selections.....8

Generating Submittals and Creating Excel Schedules.....9

Getting Started

Upon opening the software program “All-In-One Engineering”, an initial screen will appear (see figure 1). In the top right corner, you will see a tab called “New Project”. This is highlighted in the red box. Select it.

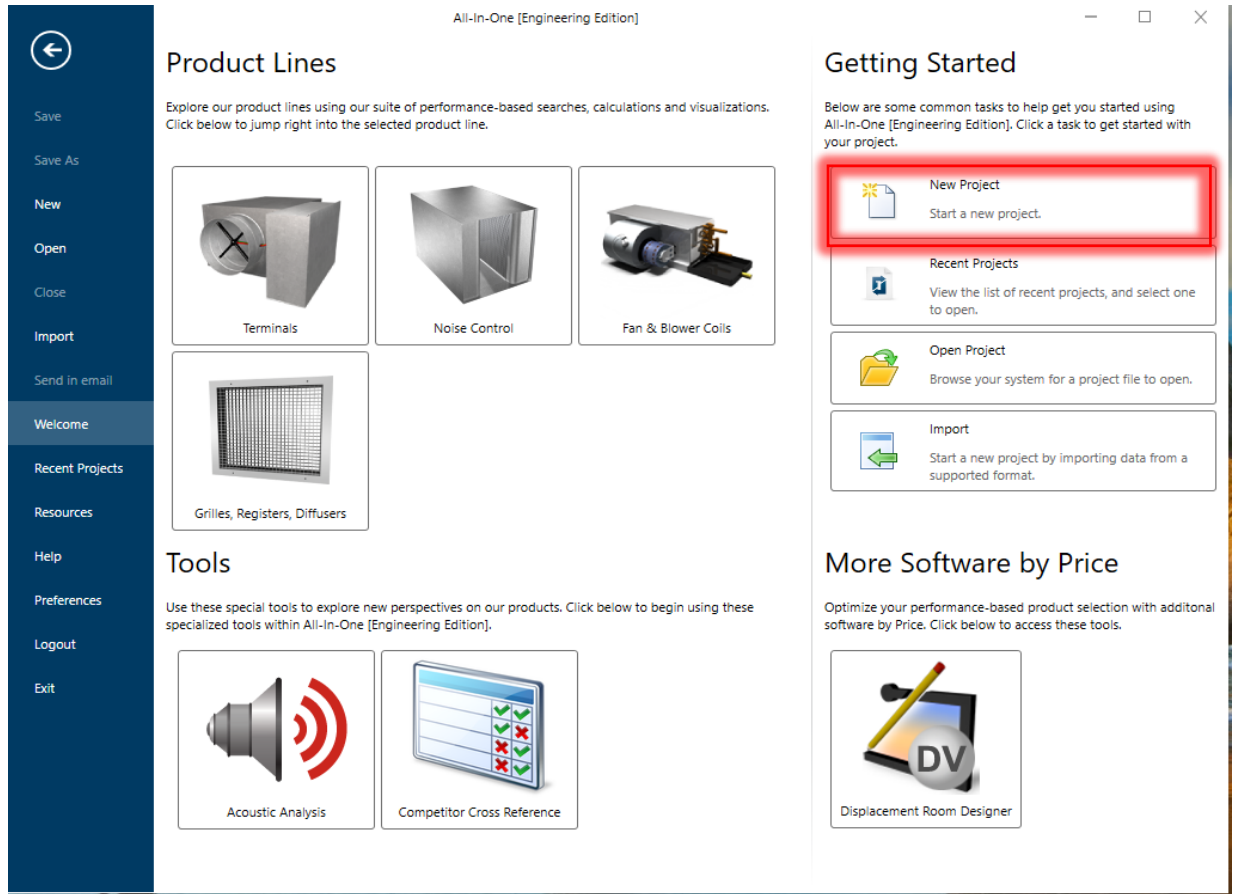


Figure 1: Welcome page of All-In-One program

When using the All-In-One Software, all your selected products will appear on the home screen. Here you can see performance of different product classes which will be covered in the section on generating submittals.

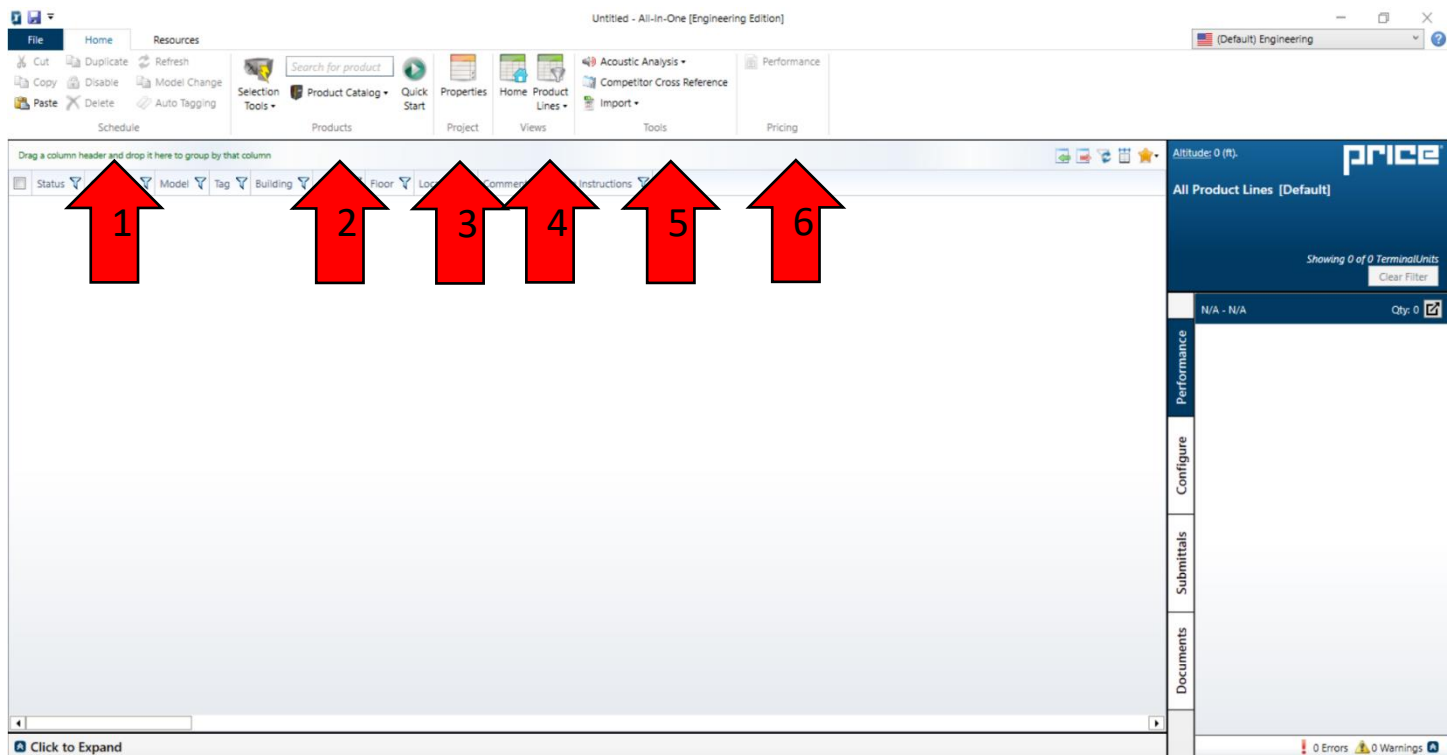


Figure 2: All-In-One Homepage

1. Schedule – This is where you can copy and paste information on your selections directly into an Excel sheet. This is covered further in the section on generating submittals and creating schedules.
2. Products – This is the section where you make your product selections.
3. Project – This is where you can input information specific to the project you are working on.
4. Views – This is the section where you can view specific performance options to each product class.
5. Tools – The most useful tool here is the Competitor Cross Reference Button. This is where you can find the PRICE equivalent to a competitor's product.
6. Pricing – You can generate performance data for a given selection.

Terminal Quick Entry Selection Method

This is the easiest and most efficient way of selecting a list of VAV boxes. You can configure and select multiple boxes in one application. You want to start by selecting the Selection Tools icon, squared in red (figure 2).

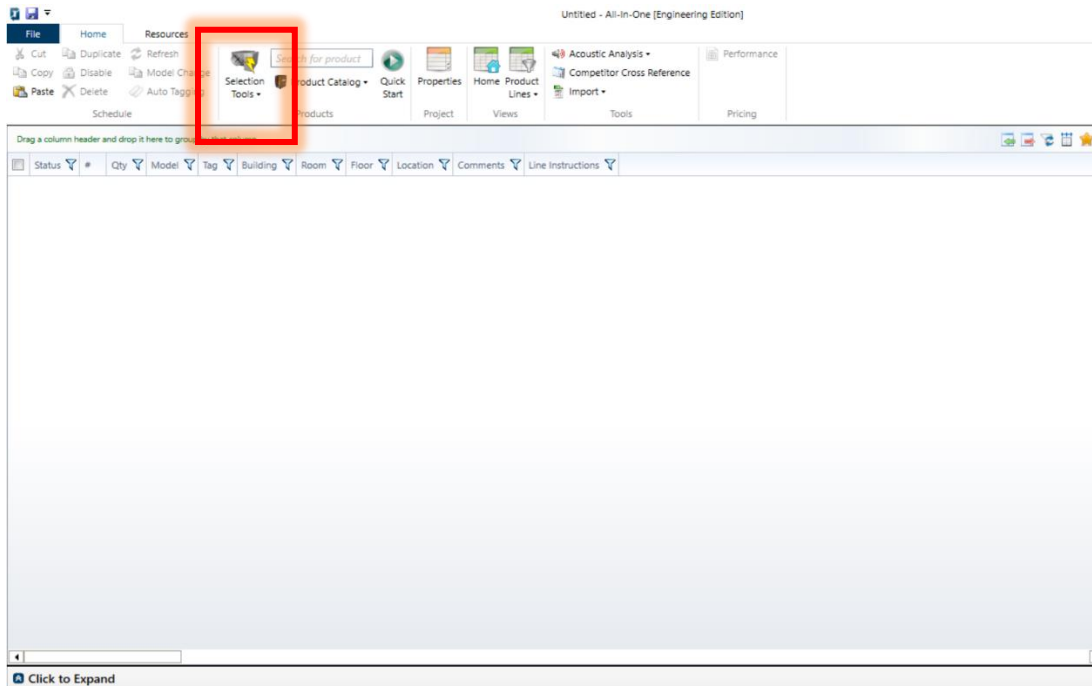


Figure 3: Selection Tools

After selecting, two options will appear, and you will select the one labeled Terminal Quick Entry. All-In-One will then provide a pop-up with the option to “start a new quick entry”. Select it. These steps can be seen in **Figure 4 and 5** (below).



Figure 4

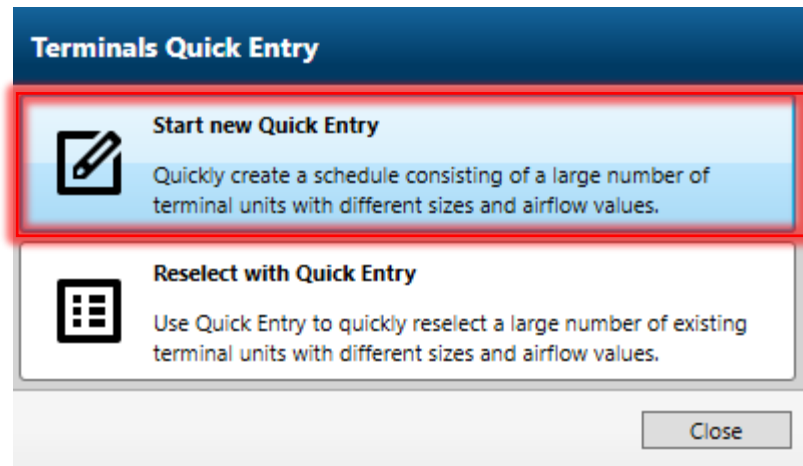


Figure 5

From here you will be prompted, step-by-step, to make your selection. The following steps will be illustrated on the **next two images**. We will select a single duct box – model SDV – with hot water reheat in this example. It will prompt you to:

1. Select a Model: You will see all PRICE configurable options in this pane. On the left will be single duct units and the right fan powered units. Select the SDV model highlighted in green. See **figure 5**.

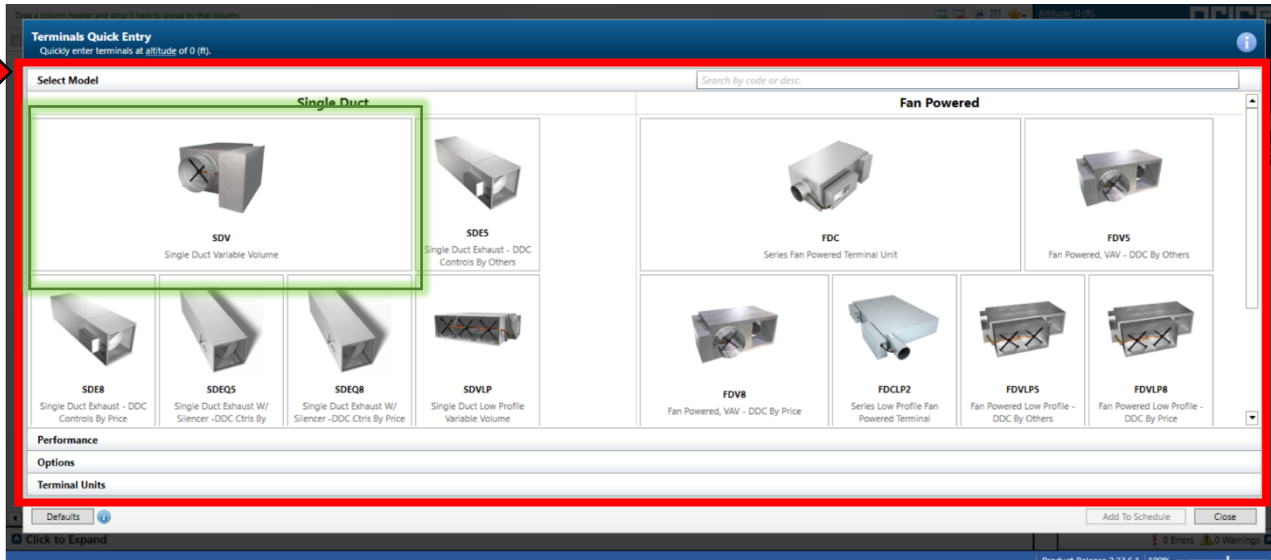


Figure 5: Model Selection

Please note: Steps 2-6 can be found on figure 6

2. Performance: Here you will select your reheat coil type – water or electric – from a dropdown (green box). Once you have selected what type of reheat coil you want to use, there are different solution method parameters you can choose from. Once you lock in your chosen parameter, this will be the driving factor in generating your box selections.

Water Coil Solution Methods: Fluid Flow (GPM), Capacity (MBH), Leaving Air Temperature, or Leaving Water Temperature.

Electric Coil Solution Methods: Capacity (kW) or Leaving Air Temperature.

Remember, you can only select one solution method and All-In-One will generate ALL box selections that fit the parameter.

3. Select options and upgrades for your box.

4. Select your box performance properties by inputting airflows, locking in a value for your chosen selection parameter, inlet size, etc. Here you can create a list of multiple selections with custom tags.

5. Add to Schedule: Clicking this button will add your list of selections to the schedule on your homepage. The program will ask, “Are you sure you want to add # item(s) to the schedule? Select yes.

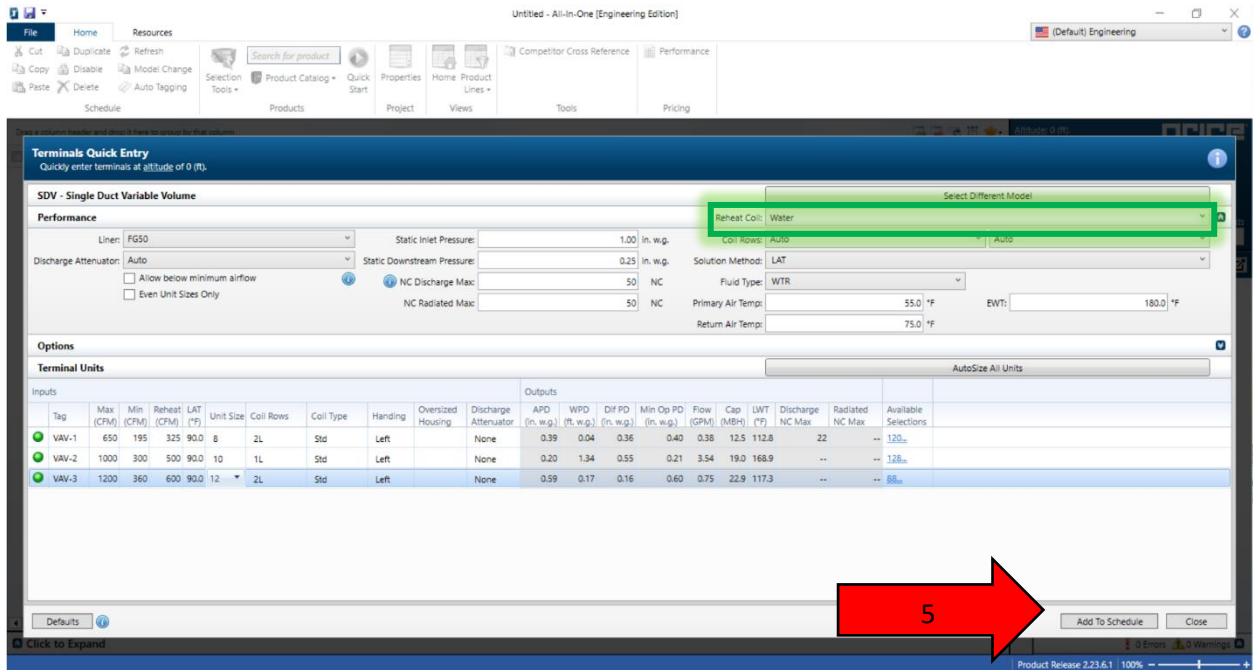


Figure 6: Performance, options, and terminal units

*When selecting box performance, after inputting airflows and solution method value, you will have a series of drop-down selections for box (unit) size, number of coil rows, and coil type. Change these values as needed. The values that appear in the dropdowns are only for selections that fit previous criteria.

Product Catalog Selection Method

This selection method will walk you through how to find products in Price's product catalog. This method is very efficient, especially if you already know the product you are looking for! Here is an example!

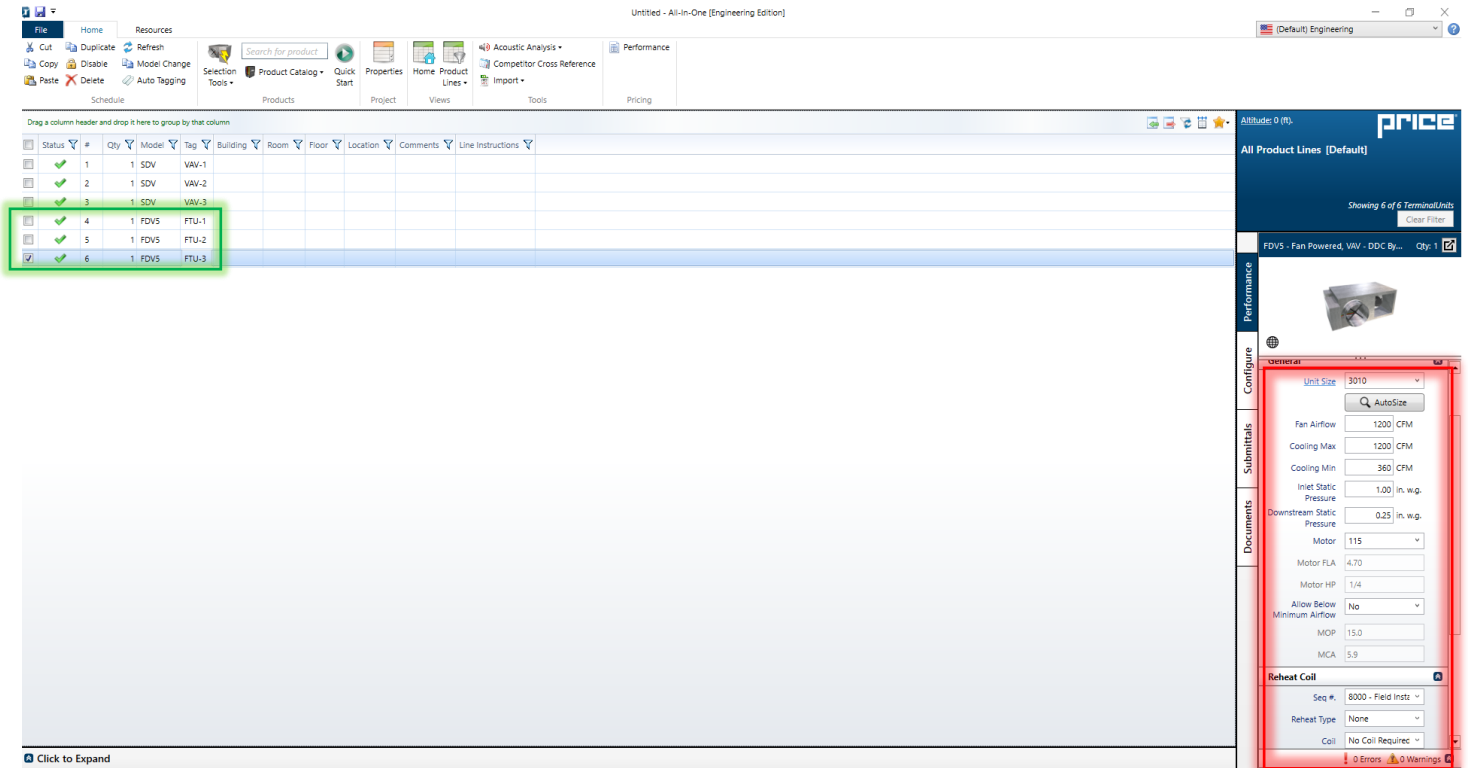


Figure 7: product catalog method

The highlighted box above (**Figure 7**) represents three Fan Powered Variable Volume Terminals, otherwise known as FDV5. The steps below will show you how to add this product from the catalog.

Step 1: Select the product catalog drop down or enter your desired product in the catalog search function.

Step 2: After opening the product catalog, follow the branch as follows: **Terminals**→ **Terminal Units**→ **Fan Powered Variable Volume Terminals** → **select model FDV5**.

Step 3: Once the FDV5 is selected, input your desired values and select the auto size function. This is highlighted in the **red box** above. This will provide you with a variety of options that match your inputs and requirements. Select the model you would like to use and add the model.

Quick Start Selection Method

This selection method will generate a list of boxes to choose from that fit your performance criteria. With this method you can only add one box at a time to your schedule. In **figure 8/9**, start by selecting the Quick Start icon, squared in red. After clicking this button, you will be prompted with options to use “Product Lines” or “Tools”. Select the sub-category called “terminals” within the product line section. Then, All-In-One will prompt you to search for a terminal. Note: You can see on the home screen a list of VAVs, and Fan Powered boxes have been added from the previous selection methods.

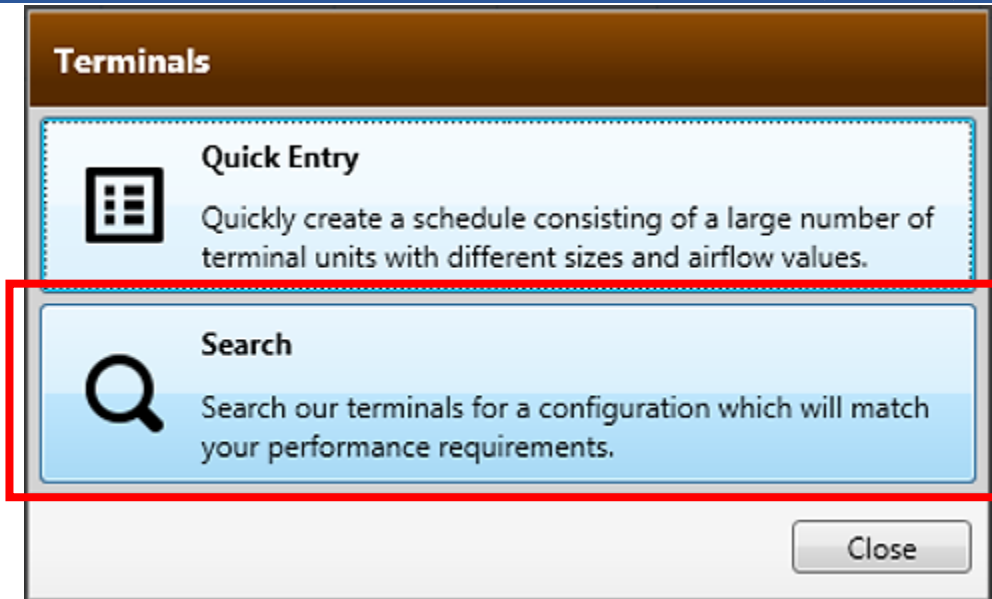
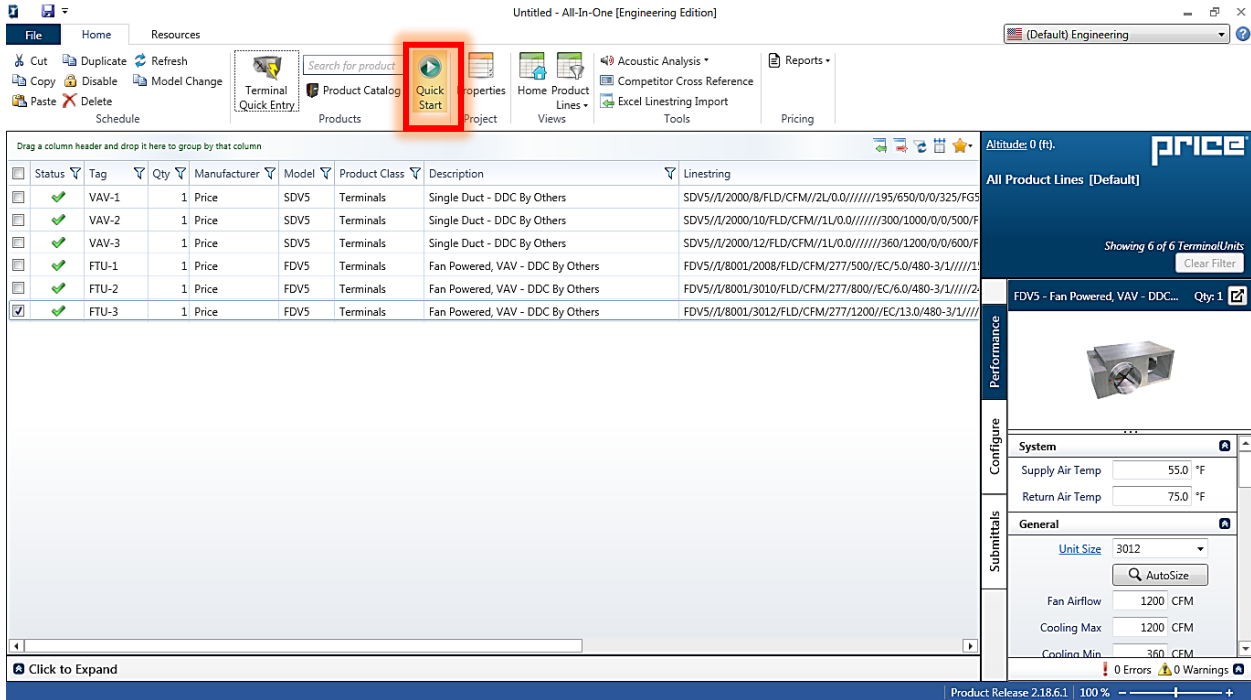


Figure 8 and Figure 9: Quick Start Selection

From here you will be prompted to make your selection. The following steps will be illustrated in **Figure 10** (below). We will select a single duct box – model SDV – with hot water reheat in this example. It will prompt you to configure:

1. Unit Information: In this section you will need to put your Tag, box type (single duct, fan powered, or a replacement heating coil), heating coil type, and liner. Along with other options such as Oversized Housing, sound attenuators, and silencer models.
2. Performance: You will put in your maximum and minimum airflows, static pressures, and NC criteria.
3. Heating Coil: You will configure your reheat coil by selecting your solution method and value for the chosen parameter, primary air temp, return air temp, and reheat airflow. Depending on your reheat coil type you will have different options on configuring the coil.
4. Search: This will generate all available boxes that fit the input criteria.
5. Results: Your search results are displayed here. You can filter results using the column headers to narrow your results. You can also change the properties shown in the columns by selecting the grid icon (green circle) in the top right corner of the results pane. This option is also available on the homepage which will be discussed in the section covering submittals.
6. Add to Schedule: This will add the selected box to the schedule on the homepage. Remember you can only add one box from this selection method.

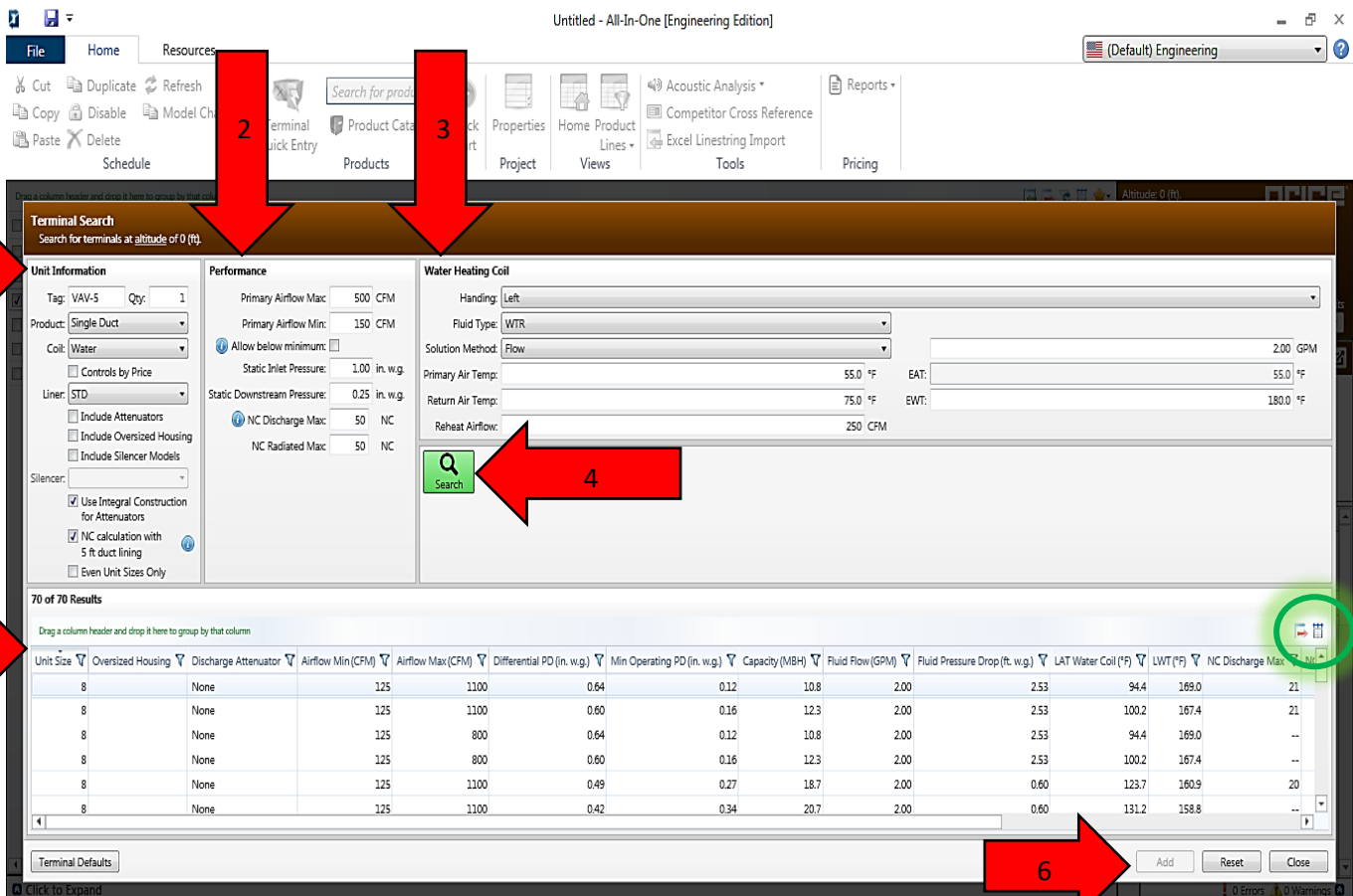


Figure 10: Terminal Search

Adjusting Terminal Selections

You can adjust previous selections from the homepage. First to view the performance of the terminal selections click the product lines drop-down and select "Terminals" (green box). There are a few different ways to adjust them from here:

1. You can scroll the properties in the right-hand pane and configure the properties that way.
2. You can select "Auto Size" which will take you back to the Quick Start selection method and you can generate a new list of results
3. You can pop out the right-hand pane by clicking the square arrow icon in the top right corner.
4. There are some properties you can change by simply clicking and changing them on the home screen. You can adjust properties shown by clicking the grid icon in the top right corner.
5. Model Change: You can change your selected model to a different PRICE model of the same product class.
6. Global Change: With this function you can select multiple items and make the same change to each selected item at the same time. NOTE: In this feature, some configurable boxes are a beige color. This indicates that between all the items you have selected, there are different values in that field for each selection. If you hover your mouse over the field, you will see all the different values for that field. Notice the correlation between the home screen and Global Change window on the second picture (green boxes).

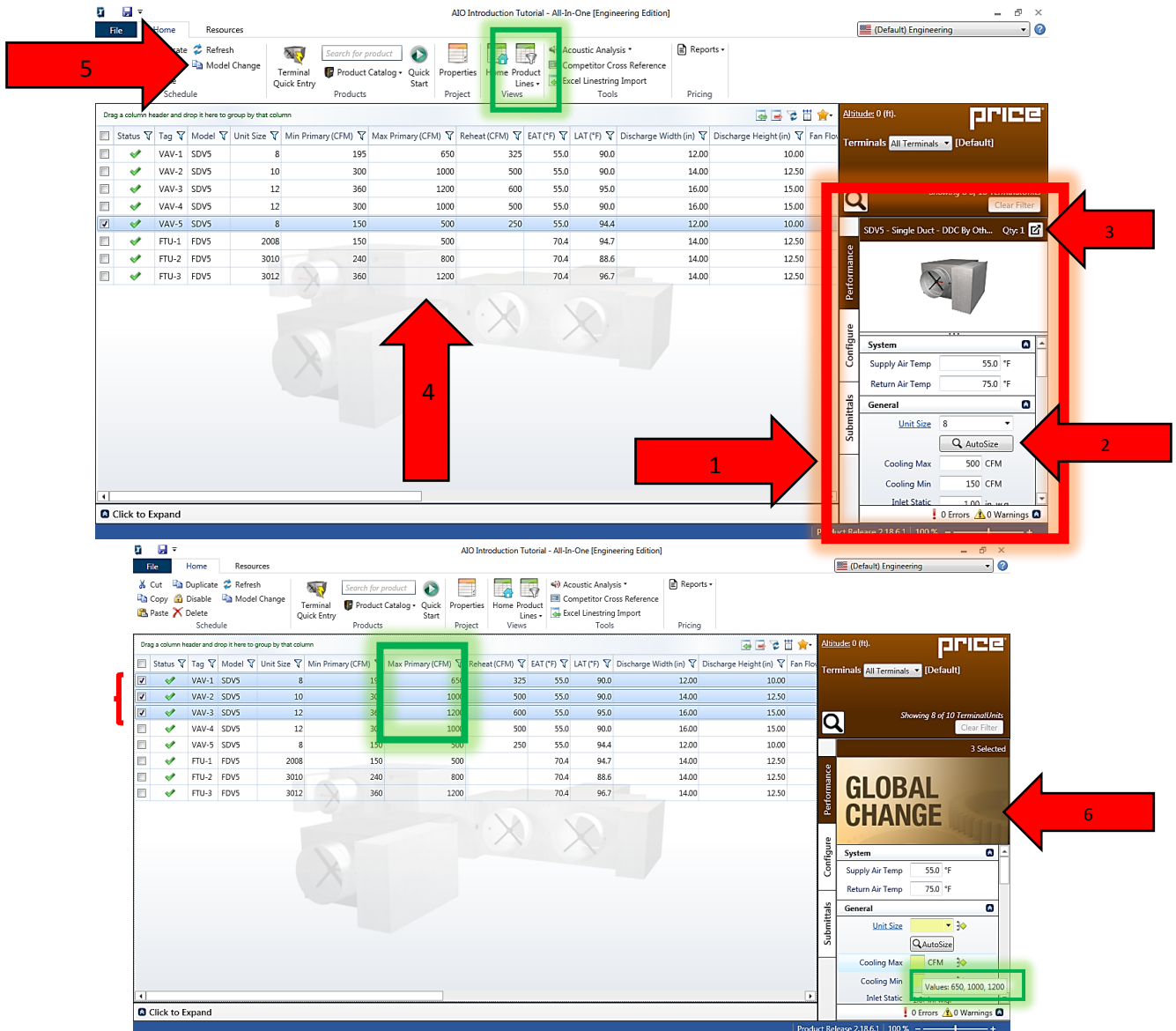


Figure 11 and Figure 12: Terminal Selections

Generating Submittals and Creating Schedules

The All-In-One Software is a Microsoft based program and can communicate directly to Microsoft Excel. This makes it easy to generate an excel sheet of selection data for schedules. You can also directly generate a PDF submittal of your products directly from the software. Remember when generating submittals or copy/pasting information to excel, the information that you wish to display will only be what is shown on the home screen. Step 3 below describes how you can manipulate properties that are shown on the home screen and the resulting submittal or schedule.

Generating a Submittal Directly from the All-In-One Program

Follow these steps to generate a custom submittal displaying the properties you wish to display.

1. Click Product Lines icon and select the products you wish to include on your submittal.
2. Select the items you want to include on the submittal. You can select individual or multiple products by clicking their check box. Or you can select all items by clicking the check box in the top left corner.
3. Select properties you want displayed by clicking the grid icon in the top right corner. A window will pop up over the home screen with all available property displays available.
4. Click Submittals Tab. From here you will see your list of submittal options.
5. Submittal Options:
 - Create a PDF Submittal by click the top “Submittal” button.
 - You can directly attached a PDF submittal to an email
 - Create a submittal in Excel format
 - “Export to CSV” will generate a spreadsheet of raw data from the items shown on the home screen.
 - “Performance Report” will generate a PDF with performance data on selected items. This format has predetermined properties shown and will not reflect the properties you have shown on the home screen. This button is only available for Terminal Units.

The screenshot shows the software interface with a table of products. A red arrow labeled '1' points to the 'Product Lines' icon in the top toolbar. A red arrow labeled '2' points to the 'Status' column header in the table. A red arrow labeled '3' points to the 'Grid' icon in the top right corner. A red arrow labeled '4' points to the 'Submittals' tab in the right-hand panel. A red arrow labeled '5' points to the 'Submittal' button in the 'Submittals' panel.

Status	Tag	Model	Unit Size	Min Primary(CFM)	Max Primary(CFM)	Reheat(CFM)	th (in)	Discharge Height (in)	Fan Flow
<input checked="" type="checkbox"/>	VAV-1	SDV5	8	195	650		12.00	10.00	
<input checked="" type="checkbox"/>	VAV-2	SDV5	10	300	1000	500	55.0	90.0	14.00
<input checked="" type="checkbox"/>	VAV-3	SDV5	12	360	1200	600	55.0	95.0	16.00
<input type="checkbox"/>	VAV-4	SDV5	12	300	1000	500	55.0	90.0	14.00
<input type="checkbox"/>	VAV-5	SDV5	8	150	500	250	55.0	94.4	12.00
<input checked="" type="checkbox"/>	FTU-1	FDV5	2008	150	500		70.4	94.7	14.00
<input checked="" type="checkbox"/>	FTU-2	FDV5	3010	240	800		70.4	88.6	14.00
<input checked="" type="checkbox"/>	FTU-3	FDV5	3012	360	1200		70.4	96.7	14.00

Figure 13: Exporting Submittal

Copy and Paste Information from All-In-One to Excel

Another way to get your information from All-In-One to an Excel sheet is to simply copy and paste. Once the information is in the Excel Sheet, you can adjust accordingly to customize your schedule. Remember, only the properties shown on the home screen will export to Excel and you can choose which properties to display from the grid icon (green circle) in the top right corner of the home screen.

1. Select items you wish to export information
2. Copy. Then you can right-click in an excel sheet and paste the information.

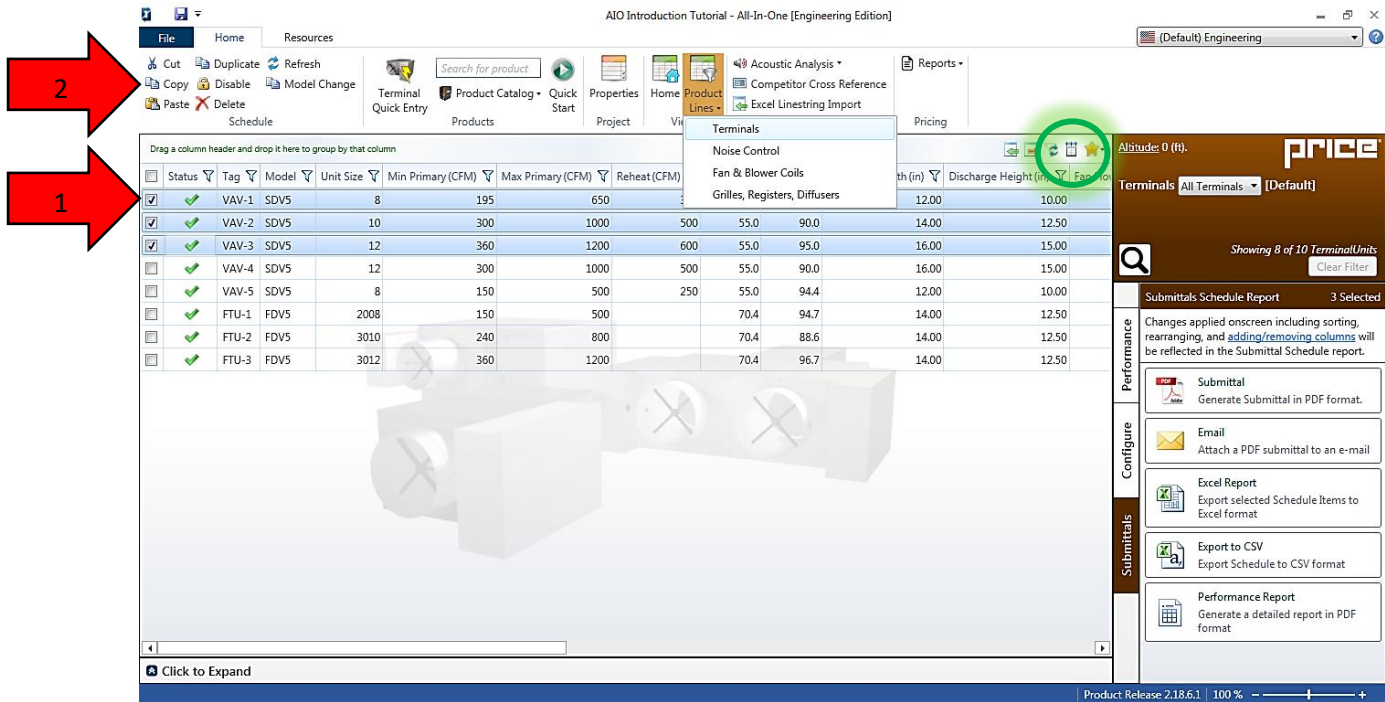


Figure 14: Copy and Paste Submittal Method

Pictured below is a before-and-after to how the information is pasted into excel and how it can be customized to your schedule style.

Before

Status	Tag	Manufacturer	Model	Inlet Dia	Min Primary (CFM)	Max Primary (CFM)	Reheat (CFM)	EAT (°F)	LAT (°F)	Fluid Flow (GPM)	EWT (°F)	LWT (°F)	Rows	Fluid PD (ft. w.g.)	MBH	Max Coil APD (in. w.g.)
Performance	VAV-1	Price	SDV5	8	195	650	325	55	90	0.37	180	112.1	2L	0.03	12.4	0.38
Performance	VAV-2	Price	SDV5	10	300	1000	500	55	90	3.38	180	168.5	1L	1.07	19	0.2
Performance	VAV-3	Price	SDV5	12	360	1200	600	55	95	7.85	180	173.2	1L	6.04	26.1	0.16

After

VAV BOX WITH WATER REHEAT COILS																
Tag	Manufacturer	Model	Inlet Dia	Airflow					Heating Coils							
				Min CFM	Max CFM	Heating CFM	EAT (°F)	LAT (°F)	Fluid Flow (GPM)	EWT (°F)	LWT (°F)	Rows	Fluid PD (ft. w.g.)	MBH	Coil APD (in. w.g.)	
VAV-1	Price	SDV5	8	195	650	325	55	90	0.37	180	112.1	2L	0.03	12.4	0.38	
VAV-2	Price	SDV5	10	300	1000	500	55	90	3.38	180	168.5	1L	1.07	19	0.2	
VAV-3	Price	SDV5	12	360	1200	600	55	95	7.85	180	173.2	1L	6.04	26.1	0.16	

KUHLMANN

SUPPLY COMPANY, INC.

Steve Liescheidt
Kuhlmann Supply Company, Inc.
training@kuhlmannsupply.com; StevenGLI@sbcglobal.net
Office: (314) 298-1114 -- Cell: (314) 706-2615